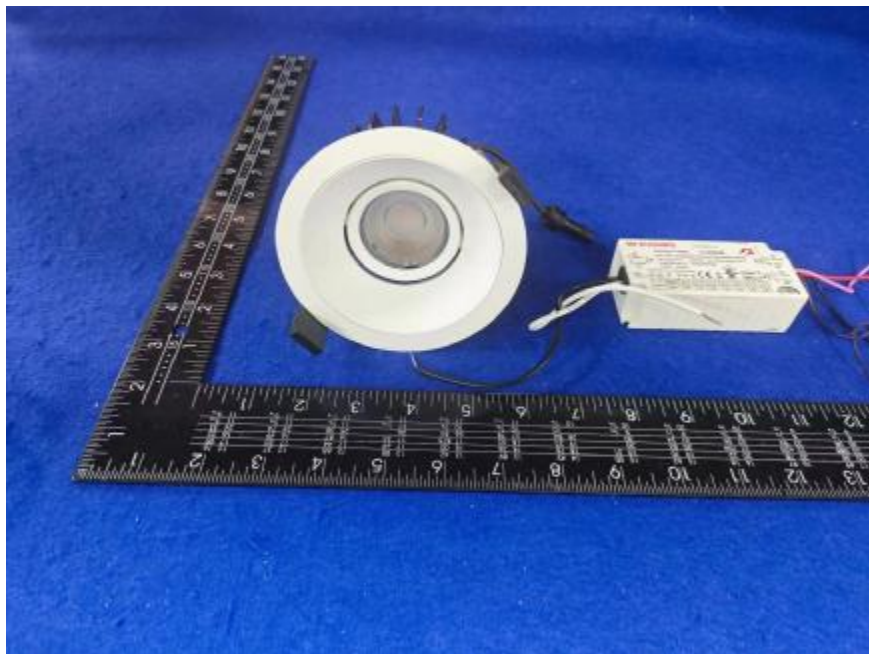


Luminaire Photograph



Light Output Ratio:	76.3%	
Luminaire Power:	17.33 W	
SHR Nominal:	0.00	Calculated using the TM5
SHR Maximum:	0.30	fine grid method.

C Range: 0 - 360DEG
C Interval: 30.0DEG
Test Speed: HIGH
Temperature: 25.3 °C
Operators: zoe
Test Date: 2023-7-12

Range: 0 - 180DEG
Interval: 1.0DEG
Test System: EVERFINE GO-SPEX500_V1 SYSTEM V2.00.461
Humidity: 65.0%
Test Distance: 3.160m [K=1.0000]
Remarks: LAMP: BXRV-DR-1830G-1000-K-23 Ra: 90
LENS: PM-1096A 24R
DRIVER: PUP20A-1WMC 450mA
30minutes warm-up

LUMINOUS INTENSITY DISTRIBUTION DIAGRAM

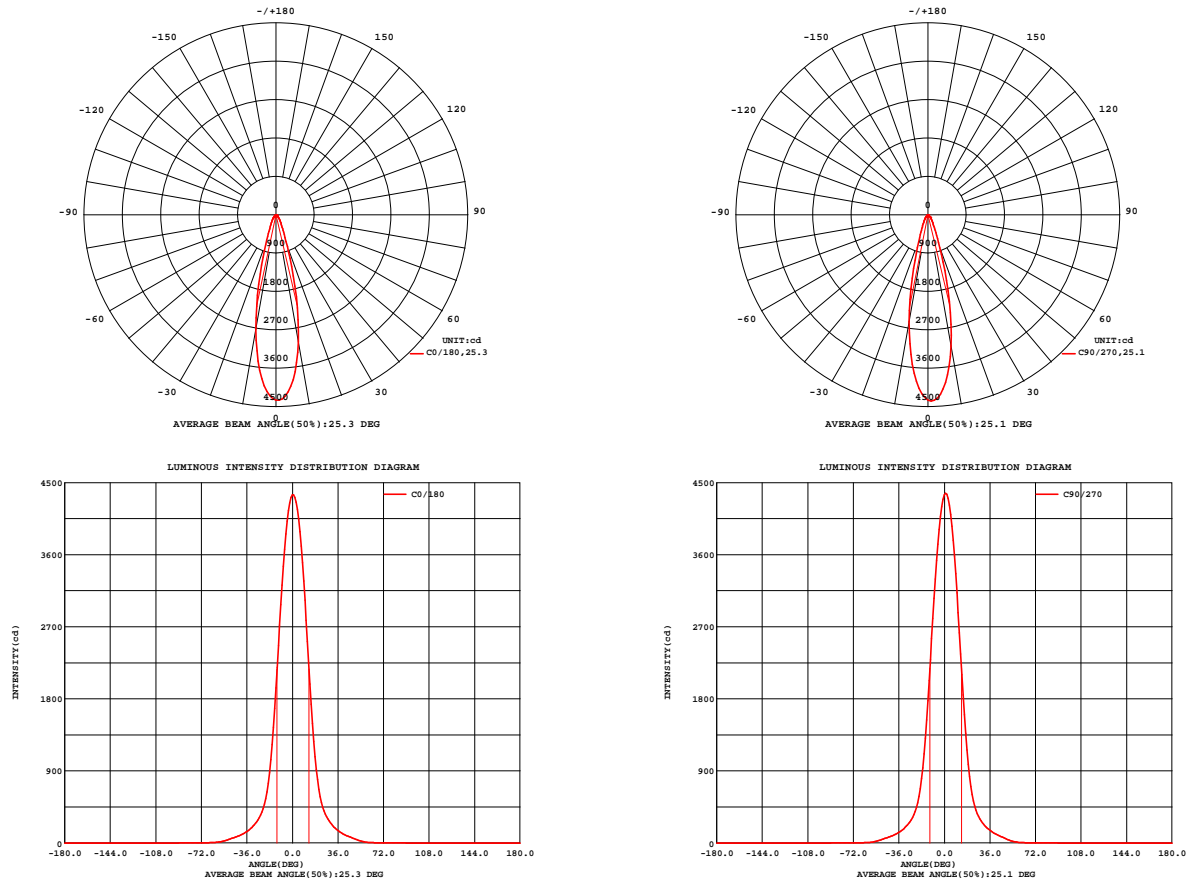


Fig. C0/C180

Fig. C90/C270

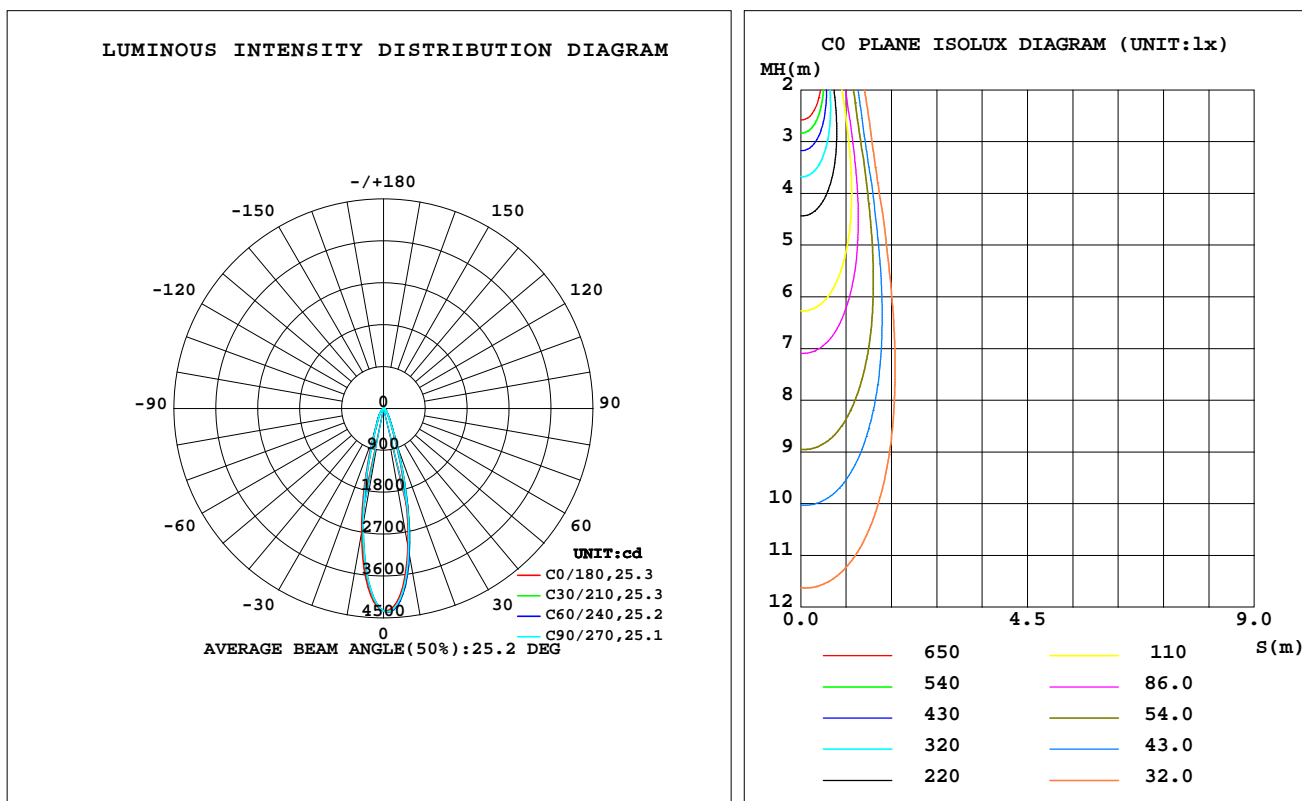
C Range: 0 - 360DEG
C Interval: 30.0DEG
Test Speed: HIGH
Temperature: 25.3 °C
Operators: zoe
Test Date: 2023-7-12

Range: 0 - 180DEG
Interval: 1.0DEG
Test System: EVERFINE GO-SPEX500_V1 SYSTEM V2.00.461
Humidity: 65.0%
Test Distance: 3.160m [K=1.0000]
Remarks: LAMP: BXR-V-DR-1830G-1000-K-23 Ra: 90
LENS: PM-1096A 24R
DRIVER: PUP20A-1WMC 450mA
30minutes warm-up

LUMINAIRE PHOTOMETRIC TEST REPORT

Test:U:120.07V I:0.1452A P:17.331W PF:0.9932 Freq:59.98Hz Lamp Flux:1493.63x1 lm		
NAME: 2118.192-LEA-15-DW	TYPE:	WEIGHT:
SPEC.: 3000K	DIM.:	SERIAL No.: 2307120892
MFR.: RISE	SUR.: 0.0063585m2	Shielding Angle:

DATA OF LAMP		PHOTOMETRIC DATA Eff: 65.76 lm/W			
MODEL	Bridgelux	I _{max} (cd)	4374	S/MH(C0/180)	0.41
NOMINAL POWER(W)	17	LOR(%)	76.3	S/MH(C90/270)	0.39
RATED VOLTAGE(V)	120	TOTAL FLUX(lm)	1139.7	UP,DN(C0-180)	0.0,41.3
NOMINAL FLUX(lm)	1493.63	CIE CLASS	DIRECT	UP,DN(C180-360)	0.0,35.0
LAMPS INSIDE	1	up(%)	0.0	CIBSE SHR NOM	0.00
TEST VOLTAGE(V)	120	down(%)	76.3	CIBSE SHR MAX	0.30



C Range: 0 - 360DEG
C Interval: 30.0DEG
Test Speed: HIGH
Temperature:25.3℃
Operators:zoe
Test Date:2023-7-12

Range: 0 - 180DEG
Interval: 1.0DEG
Test System:EVERFINE GO-SPEX500_V1 SYSTEM V2.00.461
Humidity:65.0%
Test Distance:3.160m [K=1.0000]
Remarks: LAMP:BXRV-DR-1830G-1000-K-23 Ra:90
LENS: PM-1096A 24R
DRIVER: PUP20A-1WMC 450mA
30minutes warm-up

ZONAL FLUX DIAGRAM

ZONAL FLUX DIAGRAM:

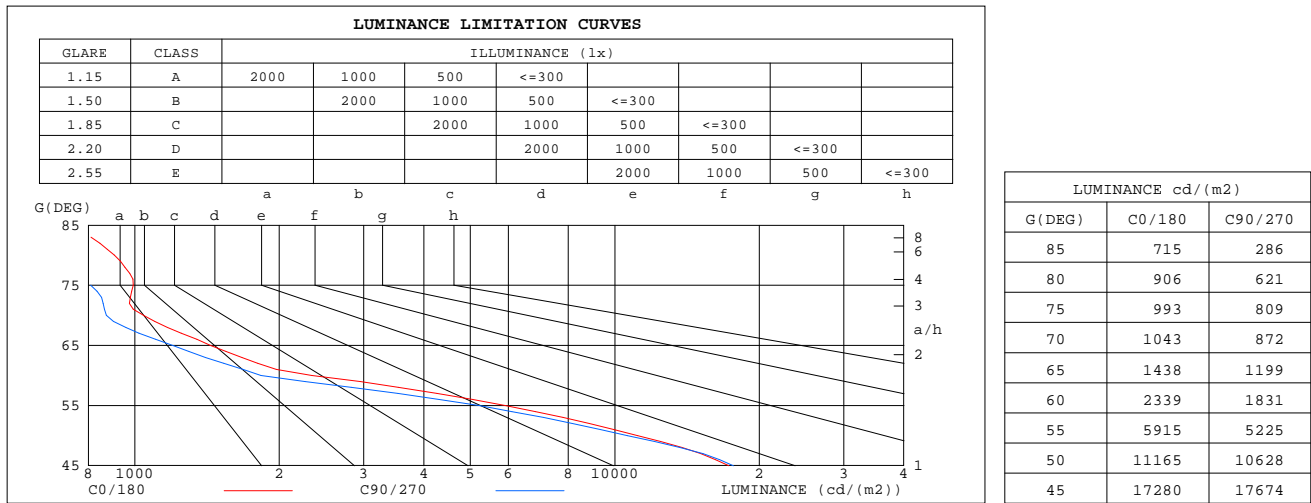
	C0	C45	C90	C135	C180	C225	C270	C315		zone	total	%lum,lamp
10	3031	3188	3124	2961	2721	2561	2550	2731	0- 10	340.5	340.5	29.9,22.8
20	792.1	866.6	828.5	735.8	637.5	585.4	579.9	645.2	10- 20	435.0	775.5	68,51.9
30	254.3	265.6	254.6	239.1	227.3	215.9	208.8	223.3	20- 30	180.0	955.5	83.8,64
40	115.2	119.8	117.7	112.1	106.1	100.0	97.79	103.5	30- 40	101.6	1057	92.8,70.8
50	45.87	45.98	43.38	45.62	45.45	42.14	38.76	41.73	40- 50	57.29	1114	97.8,74.6
60	7.474	6.895	5.814	7.420	8.122	7.153	6.013	6.804	50- 60	19.40	1134	99.5,75.9
70	2.280	2.031	1.894	2.254	2.638	2.432	2.222	2.208	60- 70	3.956	1138	99.8,76.2
80	1.006	0.7885	0.6849	0.8613	1.086	0.9222	0.7515	0.8369	70- 80	1.640	1139	100,76.3
90	0	0	0	0	0	0	0	0	80- 90	0.3382	1140	100,76.3
100	0	0	0	0	0	0	0	0	90-100	0	1140	100,76.3
110	0	0	0	0	0	0	0	0	100-110	0	1140	100,76.3
120	0	0	0	0	0	0	0	0	110-120	0	1140	100,76.3
130	0	0	0	0	0	0	0	0	120-130	0	1140	100,76.3
140	0	0	0	0	0	0	0	0	130-140	0	1140	100,76.3
150	0	0	0	0	0	0	0	0	140-150	0	1140	100,76.3
160	0	0	0	0	0	0	0	0	150-160	0	1140	100,76.3
170	0	0	0	0	0	0	0	0	160-170	0	1140	100,76.3
180	0	0	0	0	0	0	0	0	170-180	0	1140	100,76.3
DEG	LUMINOUS INTENSITY:cd									UNIT:lm		

C Range: 0 - 360DEG
C Interval: 30.0DEG
Test Speed: HIGH
Temperature:25.3℃
Operators:zoe
Test Date:2023-7-12

Range: 0 - 180DEG
Interval: 1.0DEG
Test System:EVERFINE GO-SPEX500_V1 SYSTEM V2.00.461
Humidity:65.0%
Test Distance:3.160m [K=1.0000]
Remarks: LAMP:BXRV-DR-1830G-1000-K-23 Ra:90
LENS: PM-1096A 24R
DRIVER: PUP20A-1WMC 450mA
30minutes warm-up

LUMINANCE LIMITATION CURVES

Test:U:120.07V I:0.1452A P:17.331W PF:0.9932 Freq:59.98Hz Lamp Flux:1493.63x1 lm		
NAME: 2118.192-LEA-15-DW	TYPE:	WEIGHT:
SPEC.: 3000K	DIM.:	SERIAL No.: 2307120892
MFR.: RISE	SUR.: 0.0063585m2	Shielding Angle:



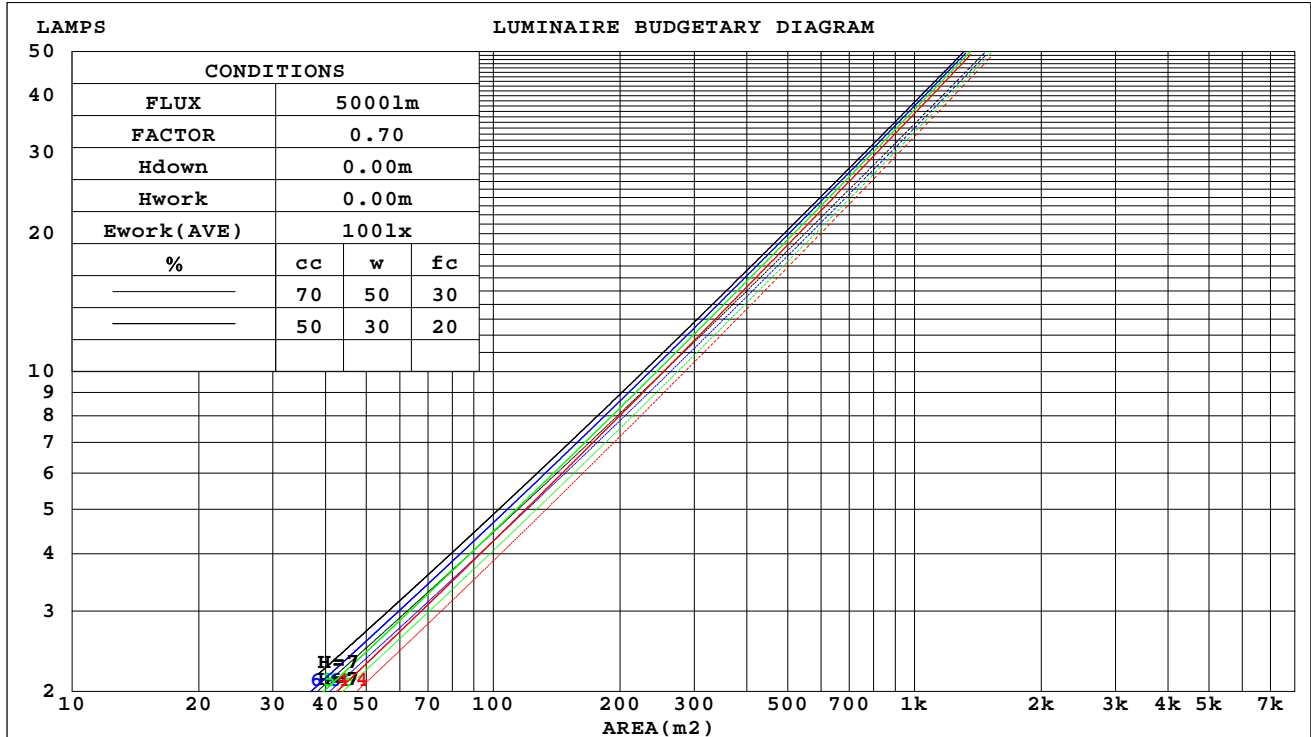
C Range: 0 - 360DEG
C Interval: 30.0DEG
Test Speed: HIGH
Temperature:25.3℃
Operators:zoe
Test Date:2023-7-12

Range: 0 - 180DEG
Interval: 1.0DEG
Test System:EVERFINE GO-SPEX500_V1 SYSTEM V2.00.461
Humidity:65.0%
Test Distance:3.160m [K=1.0000]
Remarks: LAMP:BXRV-DR-1830G-1000-K-23 Ra:90
LENS: PM-1096A 24R
DRIVER: PUP20A-1WMC 450mA
30minutes warm-up

CU AND LUMINAIRE BUDGETARY ESTIMATE DIAGRAM

Test:U:120.07V I:0.1452A P:17.331W PF:0.9932 Freq:59.98Hz Lamp Flux:1493.63lx1 lm		
NAME: 2118.192-LEA-15-DW	TYPE:	WEIGHT:
SPEC.: 3000K	DIM.:	SERIAL No.: 2307120892
MFR.: RISE	SUR.: 0.0063585m2	Shielding Angle:

cc	80%			70%			50%			30%			10%			0
w	50%	30%	10%	50%	30%	10%	50%	30%	10%	50%	30%	10%	50%	30%	10%	0
fc	20%			20%			20%			20%			20%			0
RCR	RCR:Room Cavity Ratio															



C Range: 0 - 360DEG
C Interval: 30.0DEG
Test Speed: HIGH
Temperature:25.3℃
Operators:zoe
Test Date:2023-7-12

Range: 0 - 180DEG
Interval: 1.0DEG
Test System:EVERFINE GO-SPEX500_V1 SYSTEM V2.00.461
Humidity:65.0%
Test Distance:3.160m [K=1.0000]
Remarks: LAMP:BXRV-DR-1830G-1000-K-23 Ra:90
LENS: PM-1096A 24R
DRIVER: PUP20A-1WMC 450mA
30minutes warm-up

WEC AND CCEC

Test:U:120.07V I:0.1452A P:17.331W PF:0.9932 Freq:59.98Hz Lamp Flux:1493.63x1 lm		
NAME: 2118.192-LEA-15-DW	TYPE:	WEIGHT:
SPEC.: 3000K	DIM.:	SERIAL No.: 2307120892
MFR.: RISE	SUR.: 0.0063585m2	Shielding Angle:

cc	80%			70%			50%			30%			10%			0
w	50%	30%	10%	50%	30%	10%	50%	30%	10%	50%	30%	10%	50%	30%	10%	0
fc	20%			20%			20%			20%			20%			0
RCR	RCR:Room Cavity Ratio						Wall Exitance Coefficients(WEC)									
0.0																
1.0	.116	.066	.021	.111	.063	.020	.102	.058	.019	.093	.054	.017	.085	.049	.016	
2.0	.110	.060	.018	.105	.058	.018	.097	.054	.017	.090	.051	.016	.083	.047	.015	
3.0	.103	.055	.016	.100	.053	.016	.093	.050	.015	.087	.048	.015	.081	.045	.014	
4.0	.097	.050	.015	.094	.049	.015	.088	.047	.014	.083	.045	.013	.078	.043	.013	
5.0	.092	.047	.014	.089	.046	.013	.084	.044	.013	.080	.042	.013	.076	.040	.012	
6.0	.087	.044	.012	.085	.043	.012	.081	.041	.012	.077	.040	.012	.073	.038	.011	
7.0	.083	.041	.012	.081	.040	.011	.077	.039	.011	.074	.038	.011	.070	.037	.011	
8.0	.079	.038	.011	.077	.038	.011	.074	.037	.011	.071	.036	.010	.068	.035	.010	
9.0	.075	.036	.010	.074	.036	.010	.071	.035	.010	.068	.034	.010	.065	.033	.010	
10.0	.072	.034	.010	.071	.034	.010	.068	.033	.009	.066	.033	.009	.063	.032	.009	

cc	80%			70%			50%			30%			10%			0
w	50%	30%	10%	50%	30%	10%	50%	30%	10%	50%	30%	10%	50%	30%	10%	0
fc	20%			20%			20%			20%			20%			0
RCR	RCR:Room Cavity Ratio						Ceiling Cavity Exitance Coefficients(CCEC)									
0.0	.145	.145	.145	.124	.124	.124	.085	.085	.085	.049	.049	.049	.016	.016	.016	
1.0	.129	.120	.112	.111	.103	.096	.076	.071	.067	.044	.041	.039	.014	.013	.013	
2.0	.116	.101	.088	.100	.087	.076	.068	.060	.053	.039	.035	.031	.013	.011	.010	
3.0	.106	.087	.071	.091	.075	.062	.062	.052	.043	.036	.030	.026	.012	.010	.008	
4.0	.097	.075	.058	.083	.065	.051	.057	.045	.036	.033	.026	.021	.011	.009	.007	
5.0	.089	.066	.048	.077	.057	.042	.053	.040	.030	.031	.023	.018	.010	.008	.006	
6.0	.083	.058	.041	.071	.051	.036	.049	.035	.025	.028	.021	.015	.009	.007	.005	
7.0	.077	.052	.035	.066	.045	.030	.046	.032	.021	.027	.019	.013	.009	.006	.004	
8.0	.072	.047	.030	.062	.041	.026	.043	.029	.019	.025	.017	.011	.008	.006	.004	
9.0	.068	.043	.026	.059	.037	.023	.041	.026	.016	.024	.016	.010	.008	.005	.003	
10.0	.064	.039	.023	.056	.034	.020	.039	.024	.014	.022	.014	.008	.007	.005	.003	

C Range: 0 - 360DEG
C Interval: 30.0DEG
Test Speed: HIGH
Temperature:25.3℃
Operators:zoe
Test Date:2023-7-12

Range: 0 - 180DEG
Interval: 1.0DEG
Test System:EVERFINE GO-SPEX500_V1 SYSTEM V2.00.461
Humidity:65.0%
Test Distance:3.160m [K=1.0000]
Remarks: LAMP:BXR-V-DR-1830G-1000-K-23 Ra:90
LENS: PM-1096A 24R
DRIVER: PUP20A-1WMC 450mA
30minutes warm-up

UGR(Unified Glare Rating) Table

Test:U:120.07V I:0.1452A P:17.331W PF:0.9932 Freq:59.98Hz Lamp Flux:1493.63x1 lm										
NAME: 2118.192-LEA-15-DW					TYPE:			WEIGHT:		
SPEC.: 3000K					DIM.:			SERIAL No.: 2307120892		
MFR.: RISE					SUR.: 0.0063585m2			Shielding Angle:		
ceiling/cavity	0.7	0.7	0.5	0.5	0.3	0.7	0.7	0.5	0.5	0.3
walls	0.5	0.3	0.5	0.3	0.3	0.5	0.3	0.5	0.3	0.3
working plane	0.2	0.2	0.2	0.2	0.2	0.2	0.2	0.2	0.2	0.2
Room dimensions	Viewed crosswise					Viewed endwise				
x = 2H y = 2H	14.1	14.8	14.3	15.0	15.1	14.0	14.7	14.2	14.9	15.0
3H	14.0	14.7	14.2	14.8	15.0	13.8	14.5	14.1	14.7	14.9
4H	13.9	14.6	14.2	14.8	15.0	13.8	14.4	14.0	14.6	14.8
6H	13.8	14.4	14.1	14.7	14.9	13.7	14.3	14.0	14.5	14.8
8H	13.8	14.4	14.1	14.6	14.9	13.6	14.2	13.9	14.5	14.7
12H	13.7	14.3	14.0	14.6	14.8	13.6	14.2	13.9	14.4	14.7
4H 2H	13.9	14.6	14.2	14.8	15.0	13.8	14.4	14.0	14.7	14.9
3H	13.8	14.3	14.1	14.6	14.9	13.6	14.2	13.9	14.5	14.8
4H	13.7	14.2	14.0	14.5	14.8	13.6	14.1	13.9	14.4	14.7
6H	13.6	14.1	14.0	14.4	14.8	13.5	13.9	13.8	14.3	14.6
8H	13.6	14.0	14.0	14.4	14.7	13.4	13.9	13.8	14.2	14.6
12H	13.5	13.9	13.9	14.3	14.7	13.4	13.8	13.8	14.1	14.5
8H 4H	13.5	14.0	13.9	14.3	14.7	13.4	13.9	13.8	14.2	14.6
6H	13.5	13.8	13.9	14.2	14.6	13.3	13.7	13.8	14.1	14.5
8H	13.4	13.7	13.9	14.2	14.6	13.3	13.6	13.7	14.0	14.5
12H	13.4	13.7	13.8	14.1	14.6	13.2	13.5	13.7	13.9	14.4
12H 4H	13.5	13.9	13.9	14.3	14.7	13.4	13.8	13.8	14.1	14.5
6H	13.4	13.7	13.9	14.2	14.6	13.3	13.6	13.7	14.0	14.4
8H	13.4	13.6	13.8	14.1	14.6	13.2	13.5	13.7	13.9	14.4
Variations with the observer position at spacings(CIE Pub.117):										
S = 1.0H	+ 2.3 / - 6.2					+ 2.3 / - 7.3				
1.5H	+ 2.4 / - 4.2					+ 2.7 / - 5.1				
2.0H	+ 4.9 / - 7.9					+ 5.2 / - 8.6				

CIE Pub.117, 1494 lm Total Lamp Luminous Flux Correct (8log(F/F0) = 1.4)
Area: 0.0063585 m2

C Range: 0 - 360DEG
C Interval: 30.0DEG
Test Speed: HIGH
Temperature:25.3℃
Operators:zoe
Test Date:2023-7-12

Range: 0 - 180DEG
Interval: 1.0DEG
Test System:EVERFINE GO-SPEX500_V1 SYSTEM V2.00.461
Humidity:65.0%
Test Distance:3.160m [K=1.0000]
Remarks: LAMP:BXRV-DR-1830G-1000-K-23 Ra:90
LENS: PM-1096A 24R
DRIVER: PUP20A-1WMC 450mA
30minutes warm-up

UTILIZATION FACTORS TABLE

Test:U:120.07V I:0.1452A P:17.331W PF:0.9932 Freq:59.98Hz Lamp Flux:1493.63x1 lm		
NAME: 2118.192-LEA-15-DW	TYPE:	WEIGHT:
SPEC.: 3000K	DIM.:	SERIAL No.: 2307120892
MFR.: RISE	SUR.: 0.0063585m2	Shielding Angle:

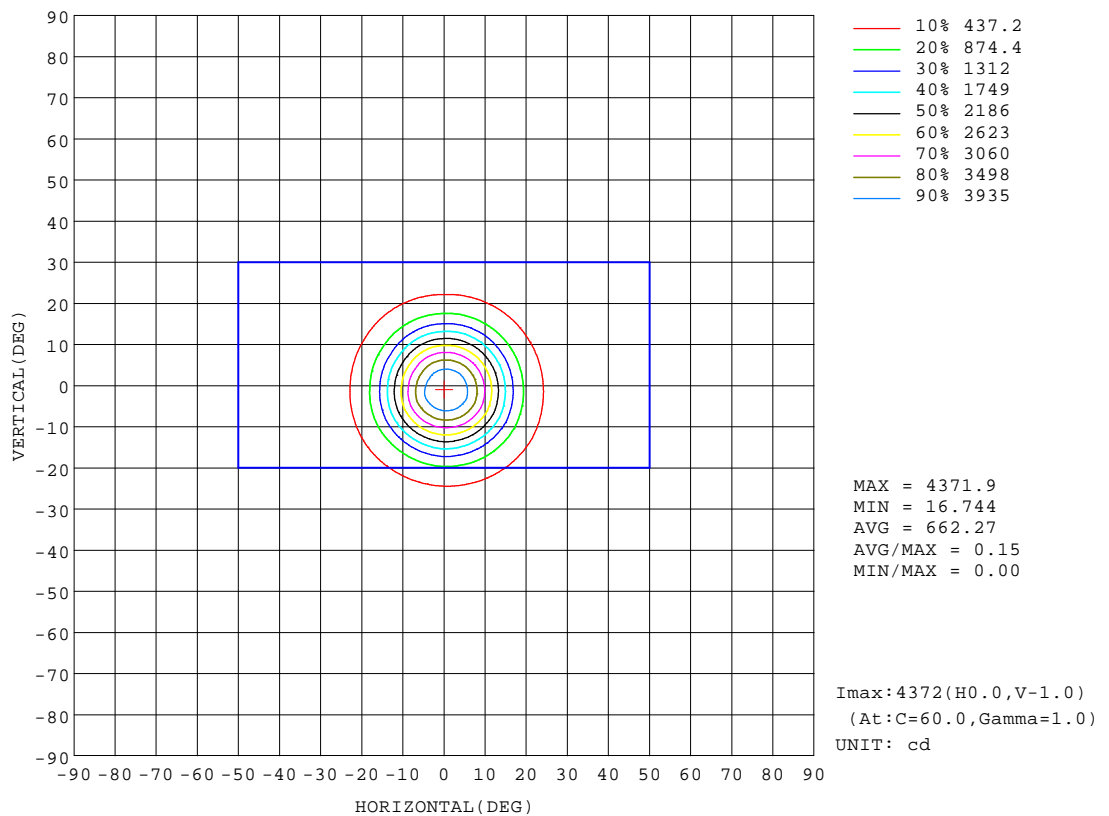
REFLECTANCE										
Ceiling	0.8	0.8	0.8	0.7	0.7	0.7	0.5	0.5	0.5	0
Walls	0.7	0.5	0.3	0.7	0.5	0.3	0.7	0.5	0.3	0
Working plane	0.2	0.2	0.2	0.2	0.2	0.2	0.2	0.2	0.2	0
ROOM INDEX	UTILIZATION FACTORS(PERCENT) $k(RI) \times RCR = 5$									
k = 0.60	66	61	58	66	61	58	65	61	58	56
0.80	72	68	65	72	67	65	71	67	64	62
1.00	76	71	69	75	71	68	74	71	68	65
1.25	79	75	72	78	74	72	76	73	71	68
1.50	81	77	75	80	77	74	78	75	73	70
2.00	83	80	77	82	79	77	80	77	76	72
2.50	84	81	79	83	80	78	81	78	77	72
3.00	85	83	81	84	82	80	81	80	78	73
4.00	87	85	83	85	83	82	83	81	80	75
5.00	88	86	85	86	85	83	83	82	81	75
ROOM INDEX	UF(total)									Direct
According to DIN EN 13032-2 2004			Suspended					SHRNOM = 1.25		

C Range: 0 - 360DEG
C Interval: 30.0DEG
Test Speed: HIGH
Temperature:25.3℃
Operators:zoe
Test Date:2023-7-12

Range: 0 - 180DEG
Interval: 1.0DEG
Test System:EVERFINE GO-SPEX500_V1 SYSTEM V2.00.461
Humidity:65.0%
Test Distance:3.160m [K=1.0000]
Remarks: LAMP:BXRV-DR-1830G-1000-K-23 Ra:90
LENS: PM-1096A 24R
DRIVER: PUP20A-1WMC 450mA
30minutes warm-up

ISOCANDELA DIAGRAM

Test:U:120.07V I:0.1452A P:17.331W PF:0.9932 Freq:59.98Hz Lamp Flux:1493.63x1 lm		
NAME: 2118.192-LEA-15-DW	TYPE:	WEIGHT:
SPEC.: 3000K	DIM.:	SERIAL No.: 2307120892
MFR.: RISE	SUR.: 0.0063585m2	Shielding Angle:

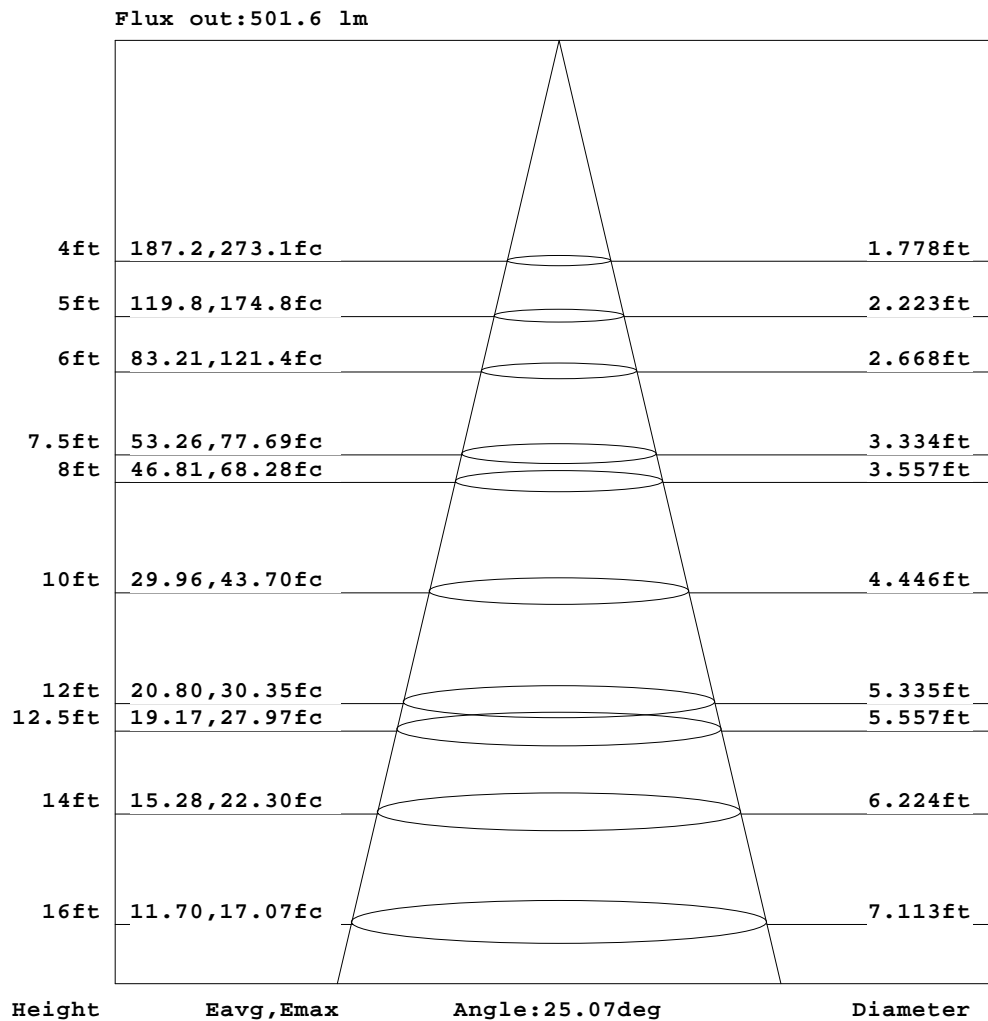


C Range: 0 - 360DEG
C Interval: 30.0DEG
Test Speed: HIGH
Temperature:25.3℃
Operators:zoe
Test Date:2023-7-12

Range: 0 - 180DEG
Interval: 1.0DEG
Test System:EVERFINE GO-SPEX500_V1 SYSTEM V2.00.461
Humidity:65.0%
Test Distance:3.160m [K=1.0000]
Remarks: LAMP:BXRV-DR-1830G-1000-K-23 Ra:90
LENS: PM-1096A 24R
DRIVER: PUP20A-1WMC 450mA
30minutes warm-up

AAI Figure

Test:U:120.07V I:0.1452A P:17.331W PF:0.9932 Freq:59.98Hz Lamp Flux:1493.63x1 lm		
NAME: 2118.192-LEA-15-DW	TYPE:	WEIGHT:
SPEC.: 3000K	DIM.:	SERIAL No.: 2307120892
MFR.: RISE	SUR.: 0.0063585m2	Shielding Angle:



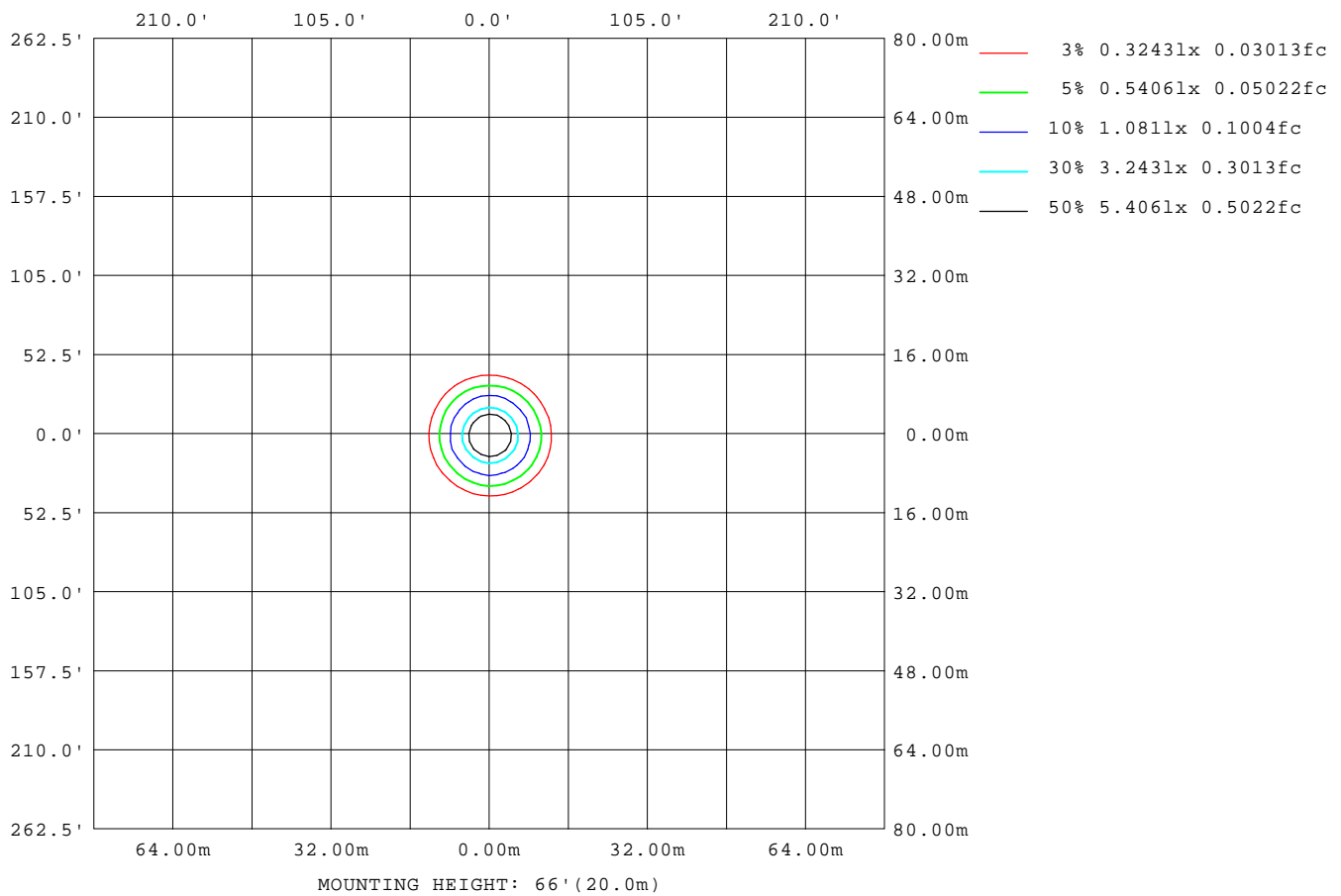
Note: The Curves indicate the illuminated area and the average illumination when the luminaire is at different distance.

C Range: 0 - 360DEG
C Interval: 30.0DEG
Test Speed: HIGH
Temperature: 25.3°C
Operators: zoe
Test Date: 2023-7-12

Range: 0 - 180DEG
Interval: 1.0DEG
Test System: EVERFINE GO-SPEX500_V1 SYSTEM V2.00.461
Humidity: 65.0%
Test Distance: 3.160m [K=1.0000]
Remarks: LAMP: BXRV-DR-1830G-1000-K-23 Ra: 90
LENS: PM-1096A 24R
DRIVER: PUP20A-1WMC 450mA
30minutes warm-up

ISOLUX DIAGRAM

Test:U:120.07V I:0.1452A P:17.331W PF:0.9932 Freq:59.98Hz Lamp Flux:1493.63x1 lm		
NAME: 2118.192-LEA-15-DW	TYPE:	WEIGHT:
SPEC.: 3000K	DIM.:	SERIAL No.: 2307120892
MFR.: RISE	SUR.: 0.0063585m2	Shielding Angle:



C Range: 0 - 360DEG
C Interval: 30.0DEG
Test Speed: HIGH
Temperature:25.3℃
Operators:zoe
Test Date:2023-7-12

Range: 0 - 180DEG
Interval: 1.0DEG
Test System:EVERFINE GO-SPEX500_V1 SYSTEM V2.00.461
Humidity:65.0%
Test Distance:3.160m [K=1.0000]
Remarks: LAMP:BXRV-DR-1830G-1000-K-23 Ra:90
LENS: PM-1096A 24R
DRIVER: PUP20A-1WMC 450mA
30minutes warm-up

LED Avg.L Report

Test:U:120.07V I:0.1452A P:17.331W PF:0.9932 Freq:59.98Hz Lamp Flux:1493.63x1 lm		
NAME: 2118.192-LEA-15-DW	TYPE:	WEIGHT:
SPEC.: 3000K	DIM.:	SERIAL No.: 2307120892
MFR.: RISE	SUR.: 0.0063585m2	Shielding Angle:

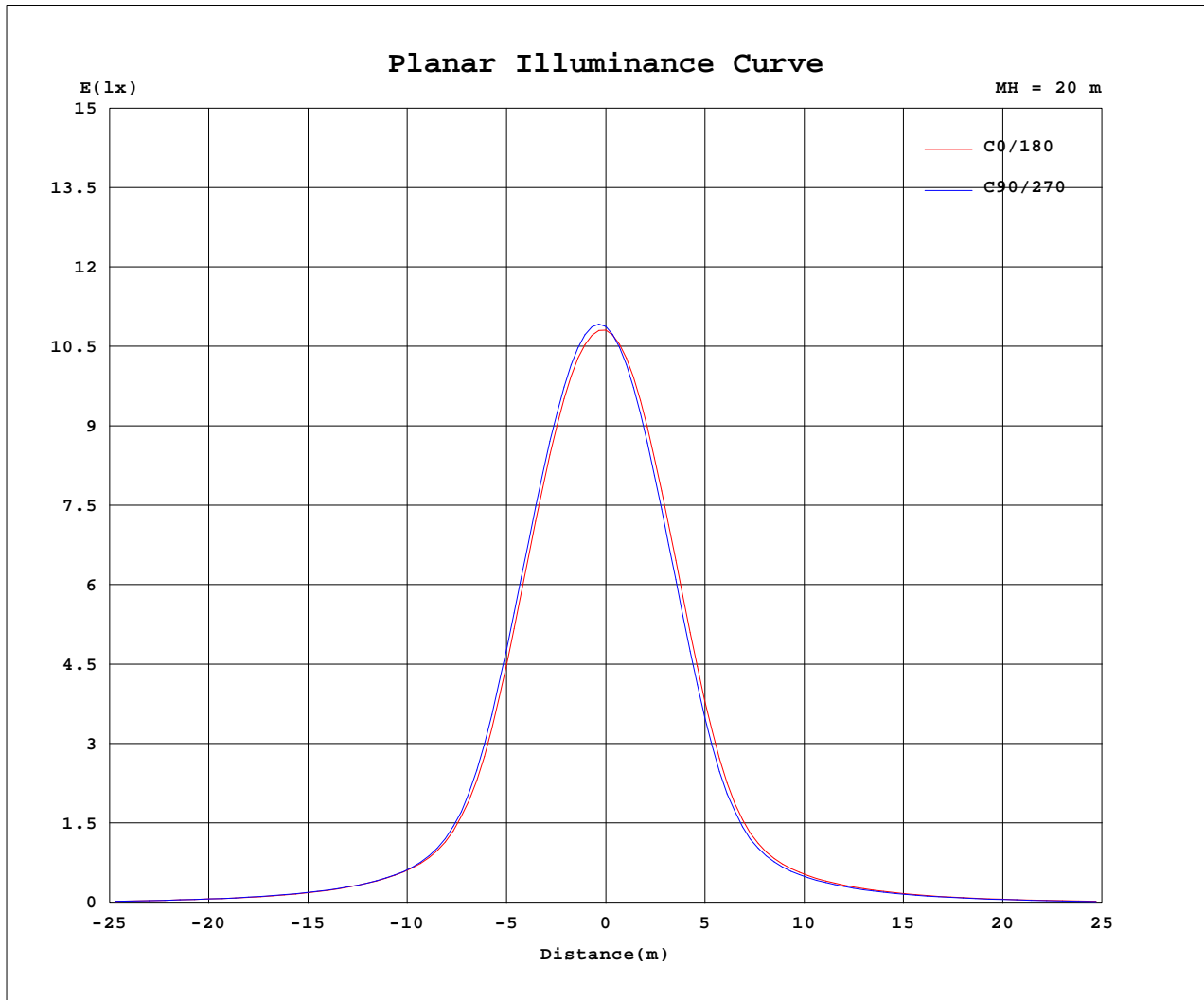
AvgL	cd/m2
L_0~180(65)av	1528
L_0~180(75)av	1074
L_0~180(85)av	719
L_90~270(65)av	1246
L_90~270(75)av	863
L_90~270(85)av	296
L_45(65)av	1424
L_45(75)av	954
L_45(85)av	412

Standard: GB/T 29293-2012

C Range: 0 - 360DEG
C Interval: 30.0DEG
Test Speed: HIGH
Temperature:25.3℃
Operators:zoe
Test Date:2023-7-12

Range: 0 - 180DEG
Interval: 1.0DEG
Test System:EVERFINE GO-SPEX500_V1 SYSTEM V2.00.461
Humidity:65.0%
Test Distance:3.160m [K=1.0000]
Remarks: LAMP:BXRV-DR-1830G-1000-K-23 Ra:90
LENS: PM-1096A 24R
DRIVER: PUP20A-1WMC 450mA
30minutes warm-up

Planar Illuminance Curve



C Range: 0 - 360DEG
 C Interval: 30.0DEG
 Test Speed: HIGH
 Temperature: 25.3 °C
 Operators: zoe
 Test Date: 2023-7-12

Range: 0 - 180DEG
 Interval: 1.0DEG
 Test System: EVERFINE GO-SPEX500_V1 SYSTEM V2.00.461
 Humidity: 65.0%
 Test Distance: 3.160m [K=1.0000]
 Remarks: LAMP: BXR-V-DR-1830G-1000-K-23 Ra: 90
 LENS: PM-1096A 24R
 DRIVER: PUP20A-1WMC 450mA
 30minutes warm-up

LUMINOUS DISTRIBUTION INTENSITY DATA

Test:U:120.07V I:0.1452A P:17.331W PF:0.9932 Freq:59.98Hz Lamp Flux:1493.63x1 lm		
NAME: 2118.192-LEA-15-DW	TYPE:	WEIGHT:
SPEC.: 3000K	DIM.:	SERIAL No.: 2307120892
MFR.: RISE	SUR.: 0.0063585m2	Shielding Angle:

Table--1

UNIT: cd

C(DEG) (DEG)	0	30	60	90	120	150	180	210	240	270	300	330						
0	4347	4347	4347	4347	4347	4347	4347	4347	4347	4347	4347	4347						
5	4041	4146	4141	4103	4037	3968	3857	3757	3738	3732	3797	3903						
10	3031	3189	3188	3124	3021	2901	2721	2577	2545	2550	2650	2812						
15	1732	1897	1881	1850	1725	1604	1444	1317	1308	1310	1407	1531						
20	792	865	869	829	763	709	638	588	583	580	615	675						
25	401	431	424	410	386	369	349	331	324	319	332	357						
30	254	268	263	255	243	235	227	218	213	209	216	230						
35	170	180	176	172	166	161	155	148	145	143	148	156						
40	115	121	119	118	114	110	106	101	99.1	97.8	101	106						
45	78.1	81.2	80.3	79.4	77.5	75.4	72.5	69.2	67.8	66.9	68.5	72.1						
50	45.9	47.4	44.6	43.4	44.7	46.5	45.5	43.4	40.9	38.8	40.7	42.8						
55	21.7	22.5	19.8	19.0	20.3	22.7	22.1	21.2	19.0	17.2	19.0	20.3						
60	7.47	7.75	6.04	5.81	6.53	8.31	8.12	7.87	6.43	6.01	6.45	7.16						
65	3.88	3.87	3.38	3.22	3.55	4.22	4.33	4.30	3.77	3.48	3.58	3.86						
70	2.28	2.17	1.89	1.89	2.04	2.47	2.64	2.57	2.30	2.22	2.16	2.26						
75	1.64	1.47	1.38	1.33	1.48	1.67	1.89	1.80	1.63	1.51	1.54	1.61						
80	1.01	0.86	0.72	0.68	0.78	0.95	1.09	1.01	0.84	0.75	0.78	0.90						
85	0.40	0.27	0.17	0.16	0.19	0.27	0.40	0.32	0.21	0.17	0.18	0.27						
90	0.00	0.00	0.00	0.00	0.00	0.00	0.00	0.00	0.00	0.00	0.00	0.00						
95	0.00	0.00	0.00	0.00	0.00	0.00	0.00	0.00	0.00	0.00	0.00	0.00						
100	0.00	0.00	0.00	0.00	0.00	0.00	0.00	0.00	0.00	0.00	0.00	0.00						
105	0.00	0.00	0.00	0.00	0.00	0.00	0.00	0.00	0.00	0.00	0.00	0.00						
110	0.00	0.00	0.00	0.00	0.00	0.00	0.00	0.00	0.00	0.00	0.00	0.00						
115	0.00	0.00	0.00	0.00	0.00	0.00	0.00	0.00	0.00	0.00	0.00	0.00						
120	0.00	0.00	0.00	0.00	0.00	0.00	0.00	0.00	0.00	0.00	0.00	0.00						
125	0.00	0.00	0.00	0.00	0.00	0.00	0.00	0.00	0.00	0.00	0.00	0.00						
130	0.00	0.00	0.00	0.00	0.00	0.00	0.00	0.00	0.00	0.00	0.00	0.00						
135	0.00	0.00	0.00	0.00	0.00	0.00	0.00	0.00	0.00	0.00	0.00	0.00						
140	0.00	0.00	0.00	0.00	0.00	0.00	0.00	0.00	0.00	0.00	0.00	0.00						
145	0.00	0.00	0.00	0.00	0.00	0.00	0.00	0.00	0.00	0.00	0.00	0.00						
150	0.00	0.00	0.00	0.00	0.00	0.00	0.00	0.00	0.00	0.00	0.00	0.00						
155	0.00	0.00	0.00	0.00	0.00	0.00	0.00	0.00	0.00	0.00	0.00	0.00						
160	0.00	0.00	0.00	0.00	0.00	0.00	0.00	0.00	0.00	0.00	0.00	0.00						
165	0.00	0.00	0.00	0.00	0.00	0.00	0.00	0.00	0.00	0.00	0.00	0.00						
170	0.00	0.00	0.00	0.00	0.00	0.00	0.00	0.00	0.00	0.00	0.00	0.00						
175	0.00	0.00	0.00	0.00	0.00	0.00	0.00	0.00	0.00	0.00	0.00	0.00						
180	0.00	0.00	0.00	0.00	0.00	0.00	0.00	0.00	0.00	0.00	0.00	0.00						

C Range: 0 - 360DEG
C Interval: 30.0DEG
Test Speed: HIGH
Temperature:25.3℃
Operators:zoe
Test Date:2023-7-12

Range: 0 - 180DEG
Interval: 1.0DEG
Test System:EVERFINE GO-SPEX500_V1 SYSTEM V2.00.461
Humidity:65.0%
Test Distance:3.160m [K=1.0000]
Remarks: LAMP:BXRV-DR-1830G-1000-K-23 Ra:90
LENS: PM-1096A 24R
DRIVER: PUP20A-1WMC 450mA
30minutes warm-up